

**MEZZANINE PLAN**  
SCALE: 1/4" = 1'-0"

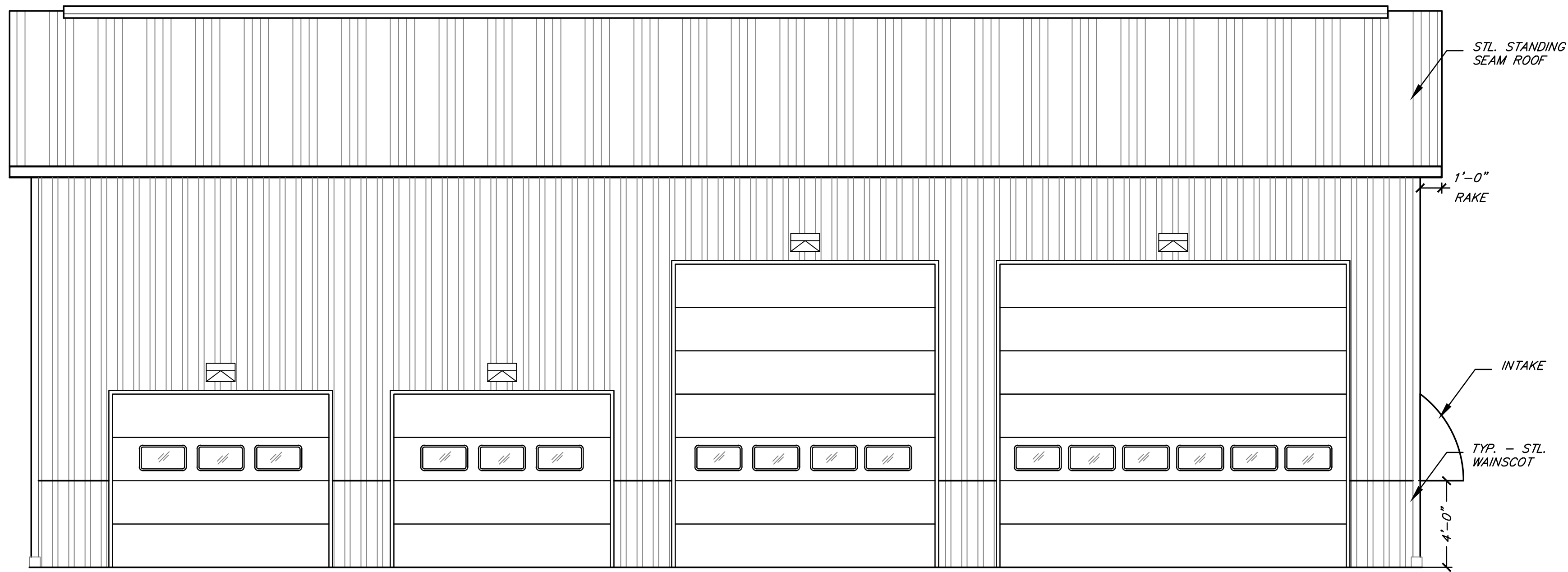
**FLOOR PLAN**  
SCALE: 1/4" = 1'-0"

6" CONC. APRON W/  
6X6-W2.9XW2.9 W.W.F.  
ON MIN. 6" COMPACTED  
SAND

Preliminary 6-22-16

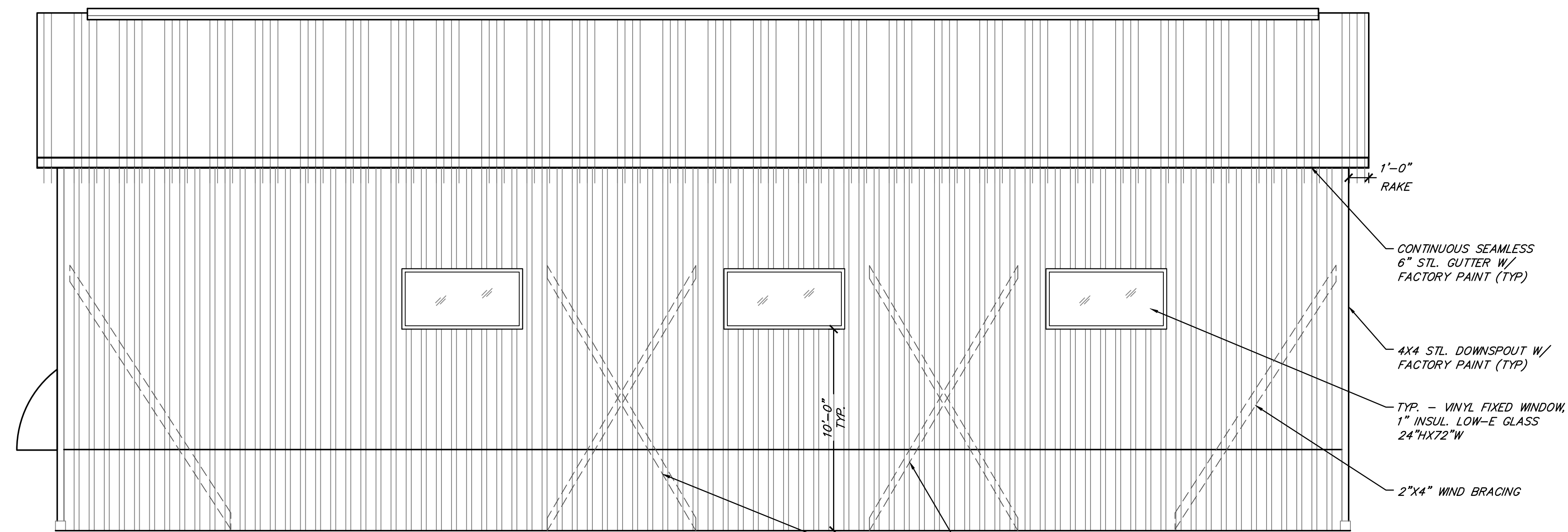
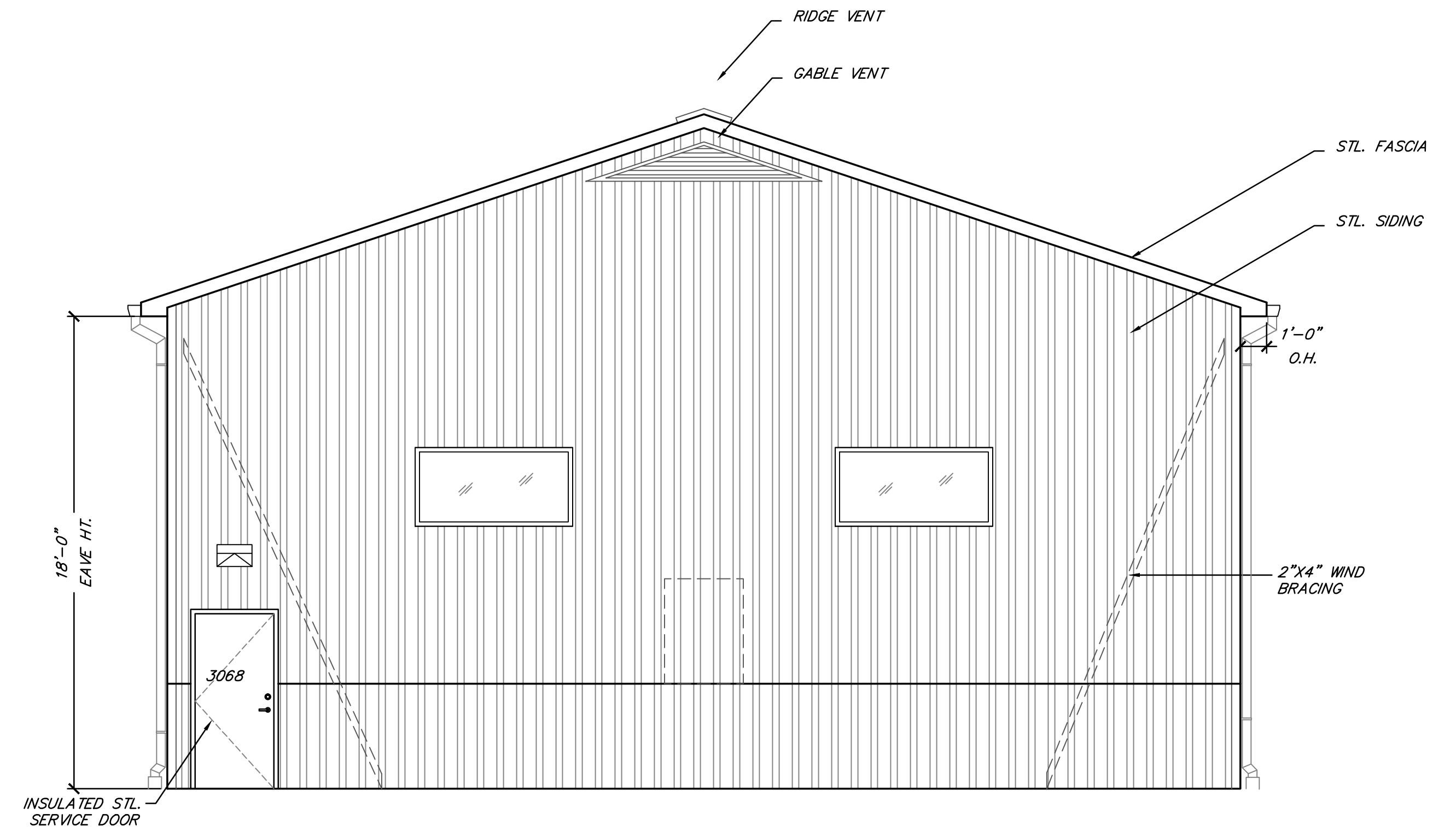
BY	MARK	REVISIONS	DATE
<small>THE WORK REPRESENTED BY THIS DRAWING WAS DESIGNED BY THE ENGINEER FOR THIS SPECIFIC APPLICATION AND SPECIFIC LOCATION DESCRIBED HEREON IN ACCORDANCE WITH THE CONDITIONS PREVALENT AT THE TIME THE DESIGN WAS DONE. THE ENGINEER DOES NOT GUARANTEE AND WILL NOT BE LIABLE FOR ANY OTHER LOCATION, CONDITION, DESIGN OR PURPOSE.</small>			
<b>VILLIAGE OF BEAR LAKE NEW DPW GARAGE</b>			
<b>PRELIMINARY FLOOR PLAN</b>			
		<small>SAGINAW OFFICE 230 S. Washington Ave. Saginaw, MI 48607 Tel. 989-754-4717 Fax. 989-754-4440 www.SpicerGroup.com</small>	
DE. BY: DSP	CH. BY: DSP	PROJECT NO.	
DR. BY: EDH	APP. BY: RRE	123591SG2016	
STDS.	SHEET 3 OF 12	A	
DATE	JUNE, 2016	FILE NO.	
SCALE	AS NOTED	DA or DPL	****-**1

PLOTTING SCALE: 1/4" = 1'-0"  
 RET. F.B. P.C. ACAD FILE: DA or DPL \*\*\*\*\*



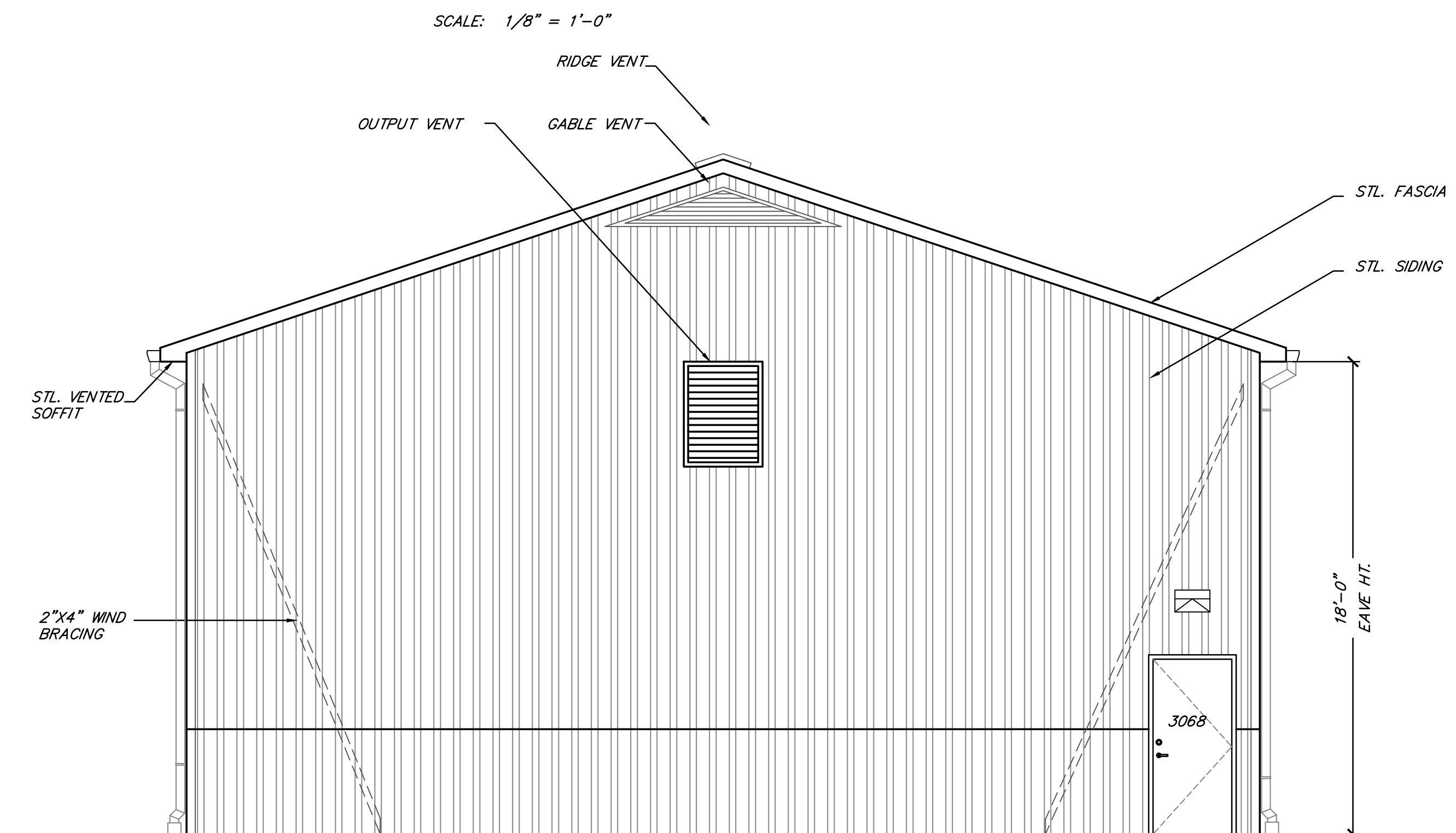
**EAST ELEVATION**

SCALE: 1/4" = 1'-0"



**WEST ELEVATION**

SCALE: 1/4" = 1'-0"



SCALE: 1/8" = 1'-0"

SCALE: 1/8" = 1'-0"

PLOTTING SCALE: 1/4" = 1'-0" RET. F.B. P.C. ACAD FILE: DA or DPL \*\*\*\*\*

BY	MARK	REVISIONS	DATE
<p>THE WORK REPRESENTED BY THIS DRAWING WAS DESIGNED BY THE ENGINEER FOR THIS SPECIFIC APPLICATION AND SPECIFIC LOCATION DESCRIBED HEREIN IN ACCORDANCE WITH THE CONDITIONS PREVALENT AT THE TIME THE DESIGN WAS DONE. THE ENGINEER DOES NOT GUARANTEE AND WILL NOT BE LIABLE FOR ANY OTHER LOCATION, CONDITION, DESIGN OR PURPOSE.</p>			
<p>VILLIAGE OF BEAR LAKE NEW DPW GARAGE</p>			
<p><b>PRELIMINARY ELEVATIONS</b></p>			
<p><b>Spicer Group</b></p>		<p>SAGINAW OFFICE 230 S. Washington Ave. Saginaw, MI 48607 Tel. 989-754-4717 Fax. 989-754-4440 www.SpicerGroup.com</p>	
DE. BY: DSP	CH. BY: DSP	PROJECT NO.	
DR. BY: EDH	APP. BY: RRE	123591SG2016	
STDS.	SHEET 3 OF 12	A	
DATE	JUNE, 2016	FILE NO.	
SCALE	AS NOTED	DA or DPL - **** - **	1

Preliminary 6-22-16